

Montague Safe Routes to School Action Plan Public Input Survey



**MICHIGAN
FITNESS
FOUNDATION**



What is
Working
well?

What is not
working
well?



What strengths exist that make it safe for students to walk or bike to school?

What barriers do you see students experience walking to, from, and around school?

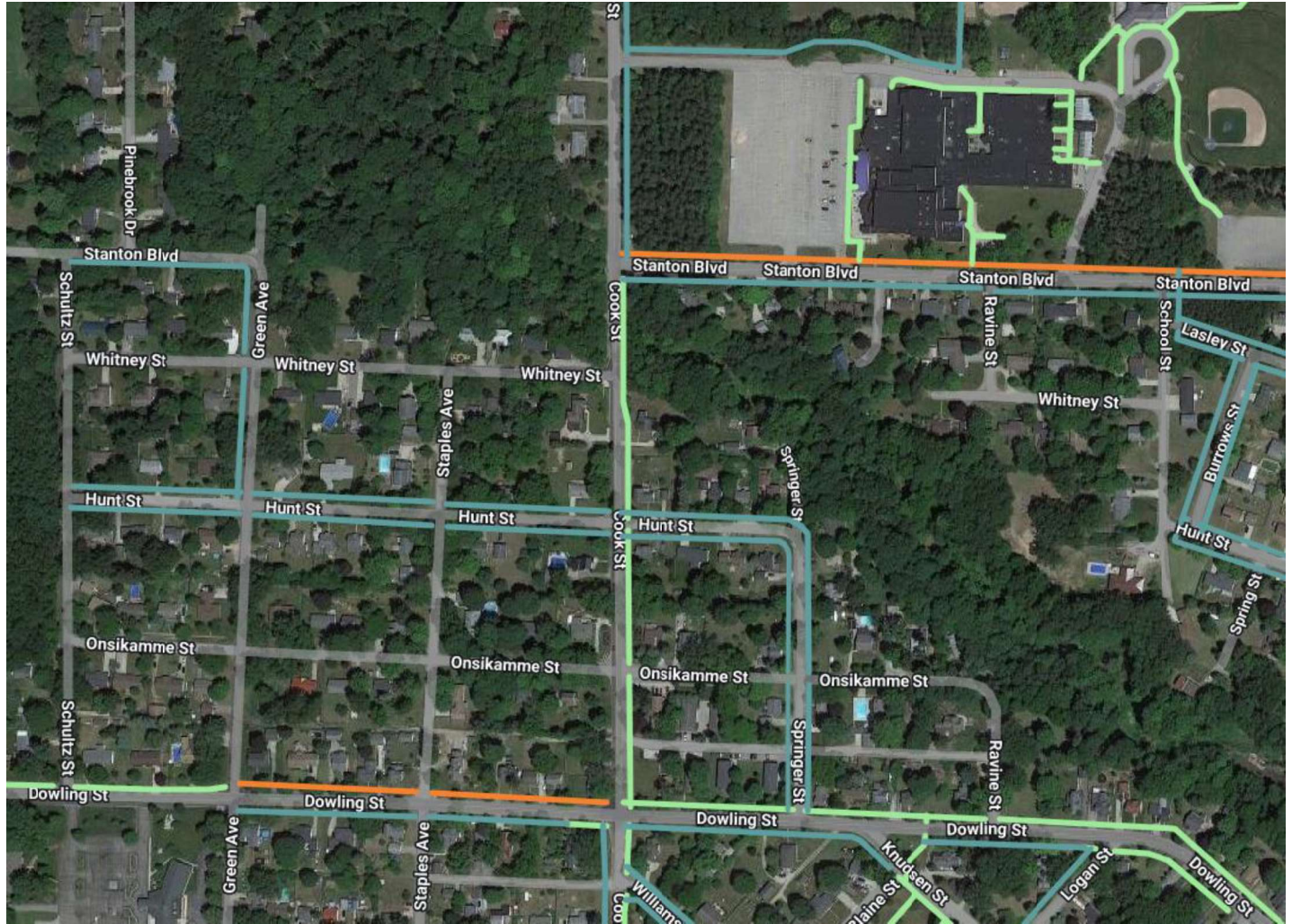
City of Montague and Montague Area Public Schools have developed an initial plan for the next 5-10 years.

The main component for Safe Routes to School is to install sidewalks on both sides of the road in areas immediately adjacent to, or leading to, each of the schools.

On the attached sheets the green lines represent sidewalks already existing. The orange lines are existing sidewalks that need to be repaired or replaced. The blue/turquoise lines are proposed sidewalks and red map pins represent proposed pedestrian crossings w/ safety lights.



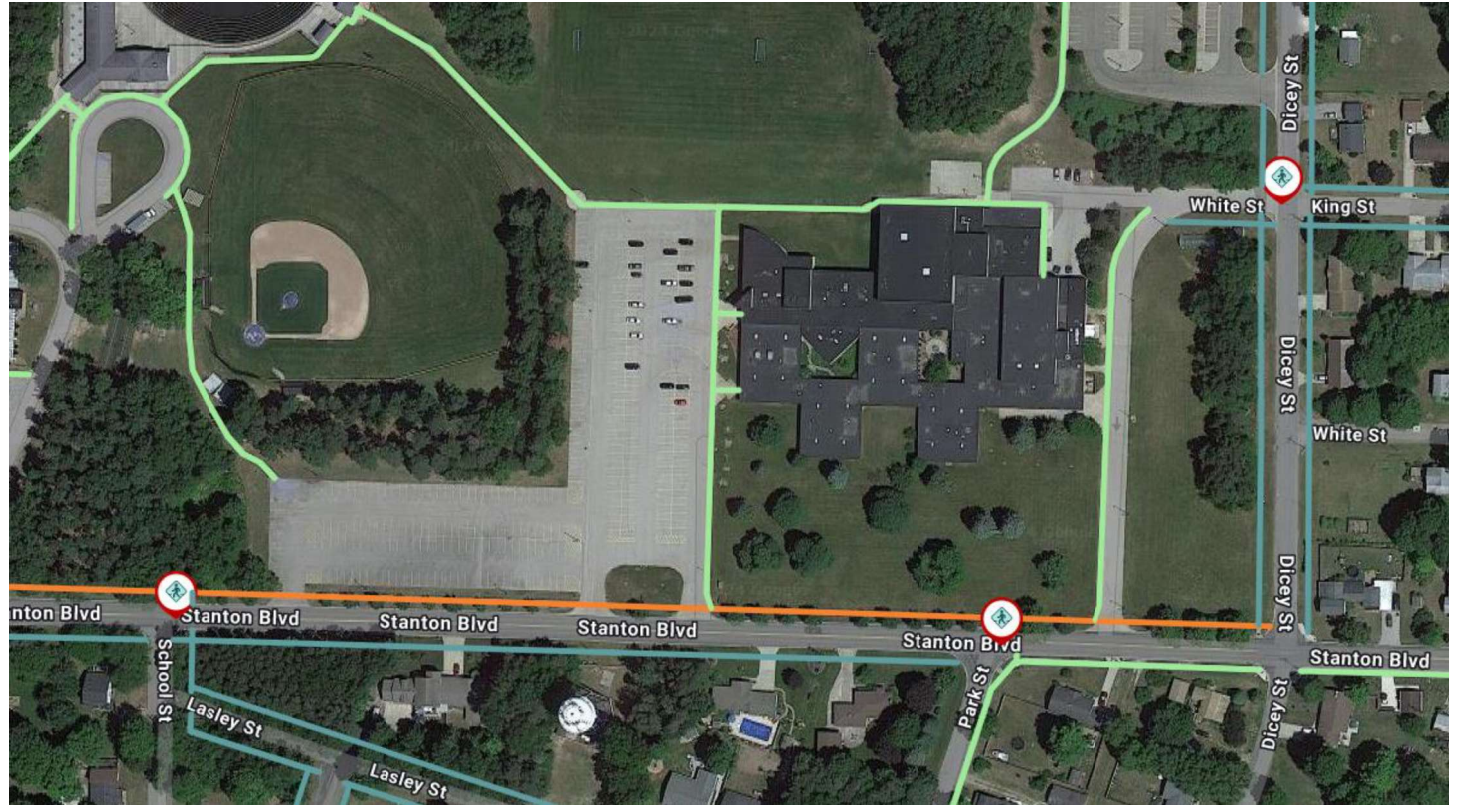
Montague High, NBC Middle, & MACC Priority Routes





High, NBC, &
MACC

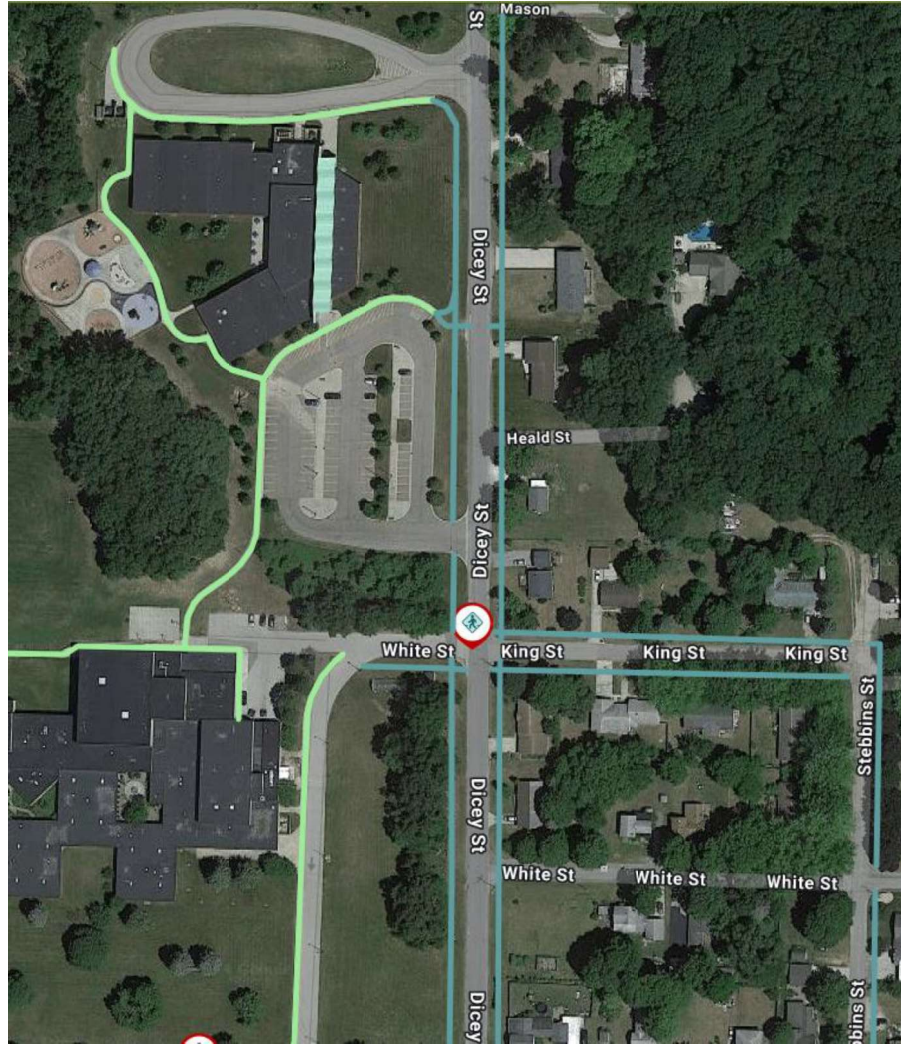
School /
Pedestrian
Crossing
Signals





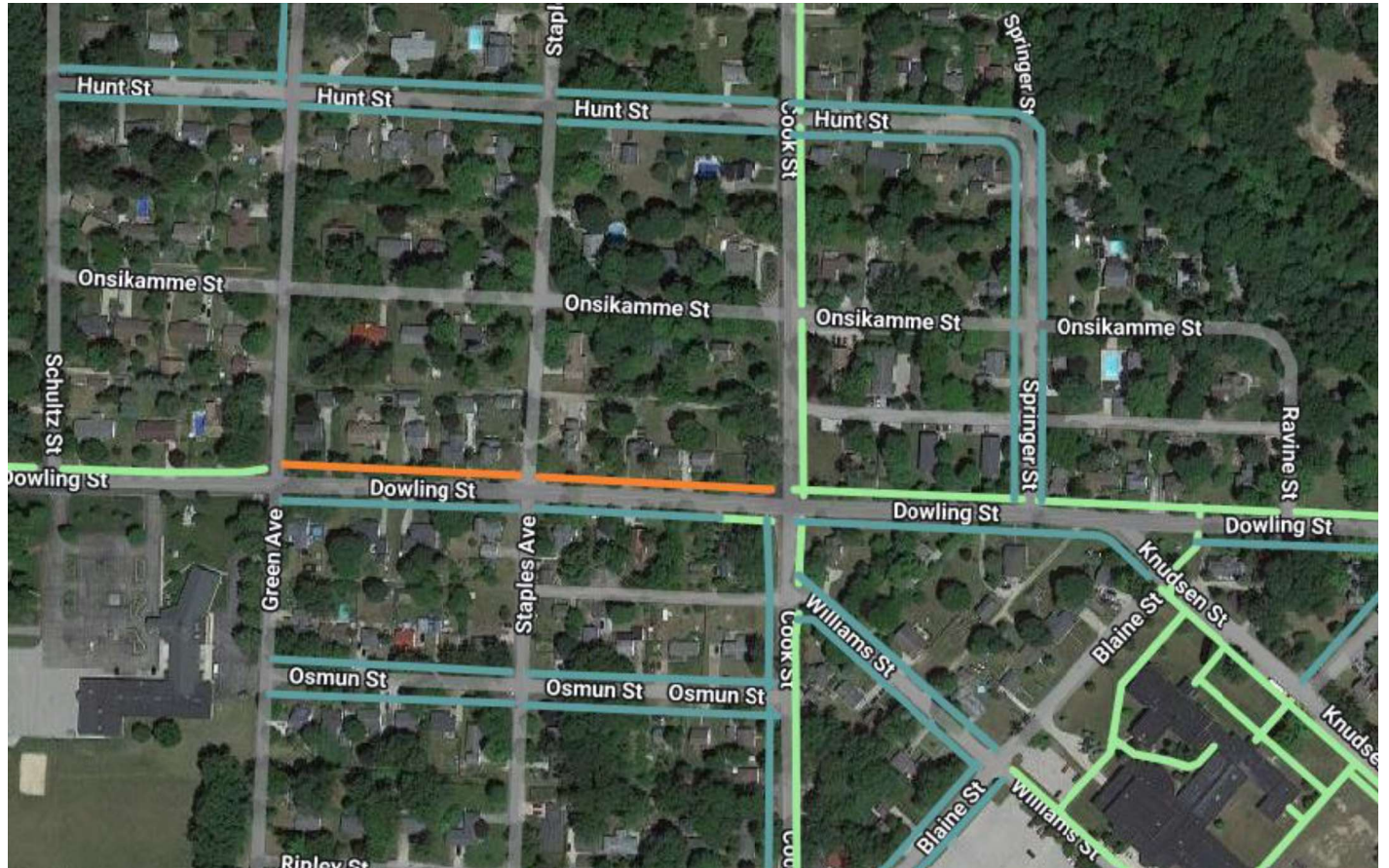
NBC & MACC

School / Pedestrian Crossing Signals



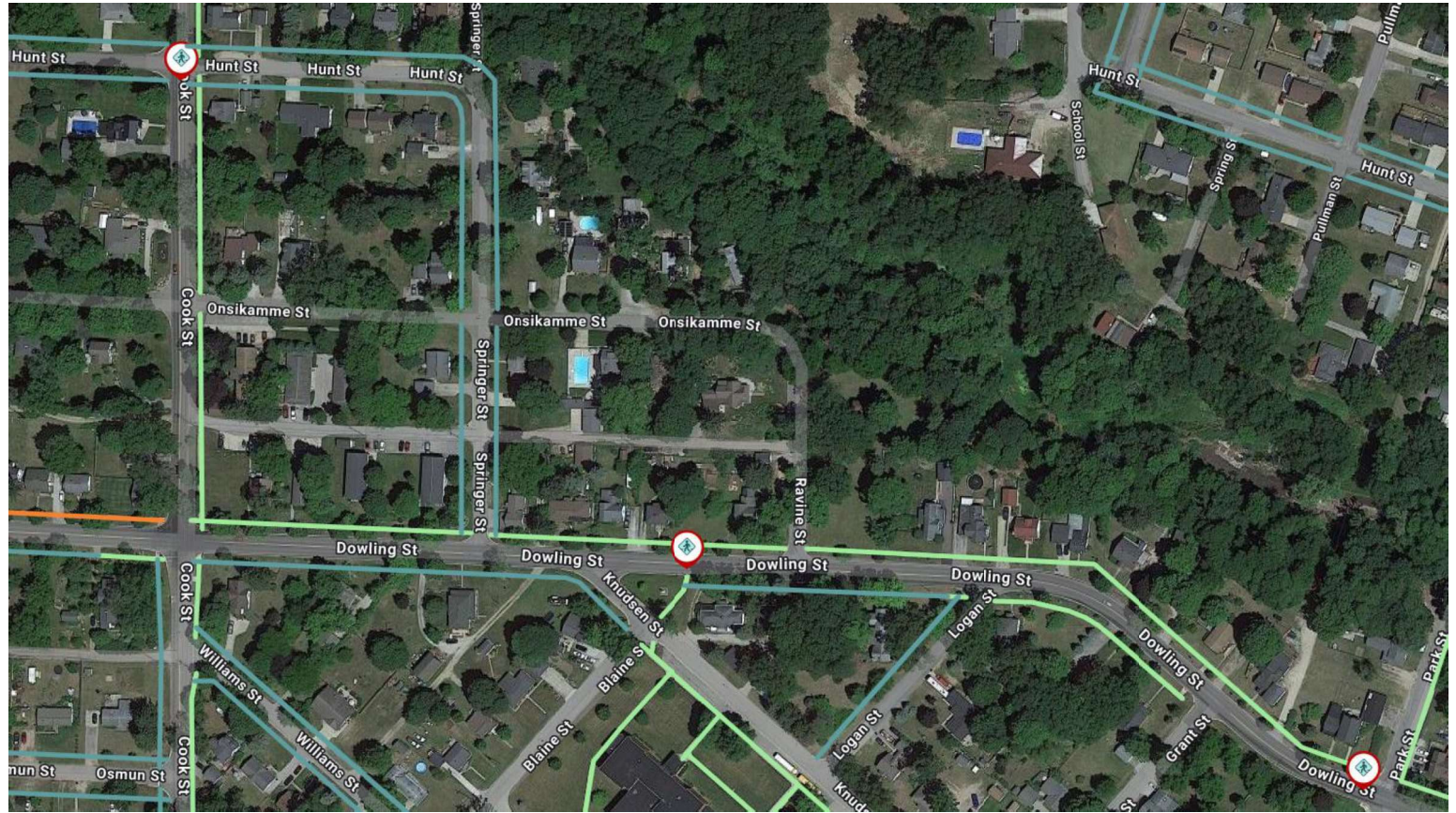


RR Oehrli
Elementary
School
Priority
Routes





RR Oehrli School / Pedestrian Crossing Signals





Report Back

What comments do you have on the proposed priority routes and pedestrian crossings?

What kinds of infrastructure and programs would you want to see that build on what's working and address what isn't?

Send input to watersewer@cityofmontague.org. Please respond by November 15th.